



## B-Myb (Phospho Thr494/497) Rabbit pAb

<b>Catalog No</b>	YP-Ab-17158
<b>Isotype</b>	IgG
<b>Reactivity</b>	Human, Mouse
<b>Applications</b>	IHC, WB
<b>Gene Name</b>	MYBL2 BMYB
<b>Protein Name</b>	Myb-related protein B (B-Myb) (Myb-like protein 2)
<b>Immunogen</b>	Synthesized peptide derived from human B-Myb (Phospho Thr494/497)
<b>Specificity</b>	This antibody detects endogenous levels of B-Myb (Phospho Thr494/497) Rabbit pAb at Human, Mouse
<b>Formulation</b>	Liquid in PBS containing 50% glycerol, and 0.02% sodium azide.
<b>Source</b>	Rabbit, polyclonal
<b>Purification</b>	The antibody was affinity-purified from rabbit serum by affinity-chromatography using specific immunogen.
<b>Dilution</b>	WB 1:500-2000 IHC 1:50-200
<b>Concentration</b>	1 mg/ml
<b>Purity</b>	≥90%
<b>Storage Stability</b>	-20°C/1 year
<b>Synonyms</b>	Myb-related protein B (B-Myb) (Myb-like protein 2)
<b>Observed Band</b>	80kD
<b>Cell Pathway</b>	Nucleus.
<b>Tissue Specificity</b>	
<b>Function</b>	function: Transcription factor involved in the regulation of cell survival, proliferation, and differentiation. Transactivates the expression of the CLU gene. PTM: Phosphorylated by cyclin A/CDK2 during S-phase. Phosphorylation at Thr-520 is probably involved in transcriptional activity. similarity: Contains 3 HTH myb-type DNA-binding domains. subunit: Component of the DREAM complex (also named LINC complex) at least composed of E2F4, E2F5, LIN9, LIN37, LIN52, LIN54, MYBL1, MYBL2, RBL1, RBL2, RBBP4, TFDP1 and TFDP2. The complex exists in quiescent cells where it represses cell cycle-dependent genes. It dissociates in S phase when LIN9, LIN37, LIN52 and LIN54 form a subcomplex that binds to MYBL22.
<b>Background</b>	MYB proto-oncogene like 2 (MYBL2) Homo sapiens The protein encoded by this gene, a member of the MYB family of transcription factor genes, is a nuclear protein involved in cell cycle progression. The encoded protein is phosphorylated by cyclin A/cyclin-dependent kinase 2 during the S-phase of the cell cycle and possesses both activator and repressor activities. It has been



shown to activate the cell division cycle 2, cyclin D1, and insulin-like growth factor-binding protein 5 genes. Two transcript variants encoding different isoforms have been found for this gene. [provided by RefSeq, Jul 2013],

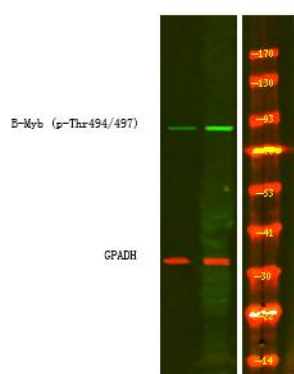
**matters needing attention**

Avoid repeated freezing and thawing!

**Usage suggestions**

This product can be used in immunological reaction related experiments. For more information, please consult technical personnel.

**Products Images**



Western Blot analysis of 1 HeLa cell, 2 LPS 100ng/mL 30min treated ,using primary antibody at 1:1000 dilution. Secondary antibody(catalog#:RS23920) was diluted at 1:10000